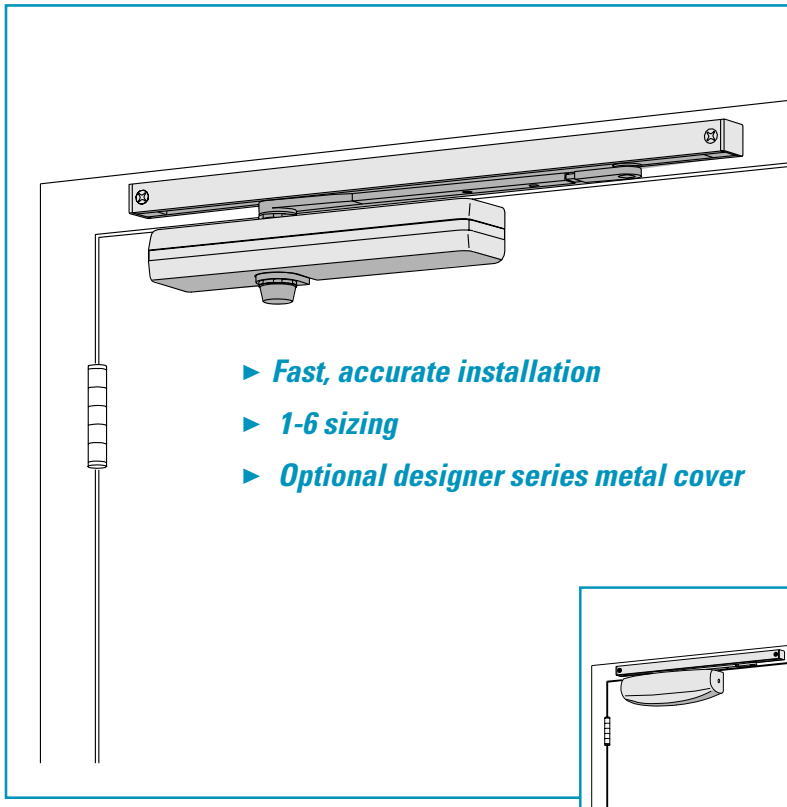


LCN 1460T SERIES

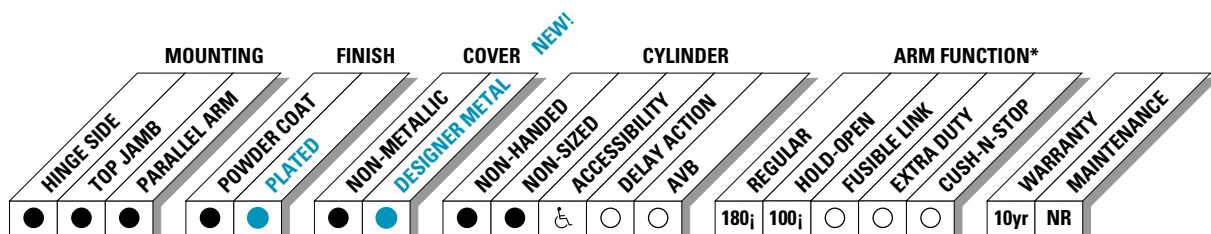


- ▶ **Fast, accurate installation**
- ▶ **1-6 sizing**
- ▶ **Optional designer series metal cover**

The 1460T SUPER STOCK® is a fully universal slim line, single lever (track) arm closer designed for interior use on narrow headframes and top rails. The modern styling and small projection make it an excellent choice for interior doors.

The 1460T Series is UL and ULC listed for self-closing doors without hold-open. Tested and certified under ANSI Standard A156.4, grade one.

- ▶ Standard 1460T series closer shipped with a standard arm, a slim line non-metallic cover, a regular track (non-hold-open), a track roller, and self reaming and tapping screws. See Page 1460T-5 for options.
- ▶ Non-sized cylinders adjustable for interior doors to 4'0".
- ▶ Non-handed closer mounts hinge side, top jamb (pull side), and stop face on either right or left swinging doors.
- ▶ Closers to meet ADA requirements. See page 1460T-7.
- ▶ Standard or custom powder coat finish.
- ▶ SRI primer for installations in corrosive conditions.



● Available
○ Not available

♿ Closer available with less than 5.0 lbs. opening force on 36" door.
* Maximum opening/hold-open point with standard template. Hinge side mount.
NR = No periodic maintenance required.

LCN 1460T SERIES

MOUNTING DETAILS

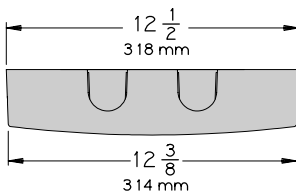
HINGE (PULL) SIDE MOUNTING

MAXIMUM OPENING

Templating allows up to 180°, trim and frame permitting, limited to 115° when optional bumper is installed.

Hold-open points at 85°, 90°, 95° or 100° with hold-open tracks.

Optional Designer Series Cover

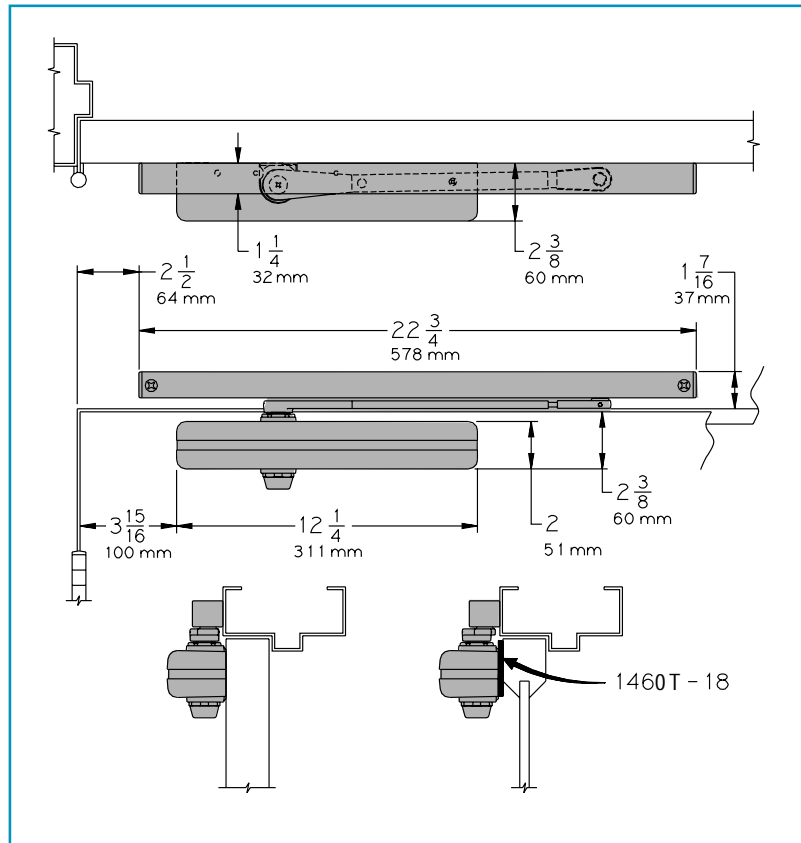


Options

- ▶ Regular track with bumper.
- ▶ Hold-open track.
- ▶ Hold-open track with bumper.
- ▶ Full cover.
- ▶ EC cover.
- ▶ Designer Series Metal cover.

Special Templates

Customized installation templates or products may be available to solve unusual applications. Contact LCN for assistance.

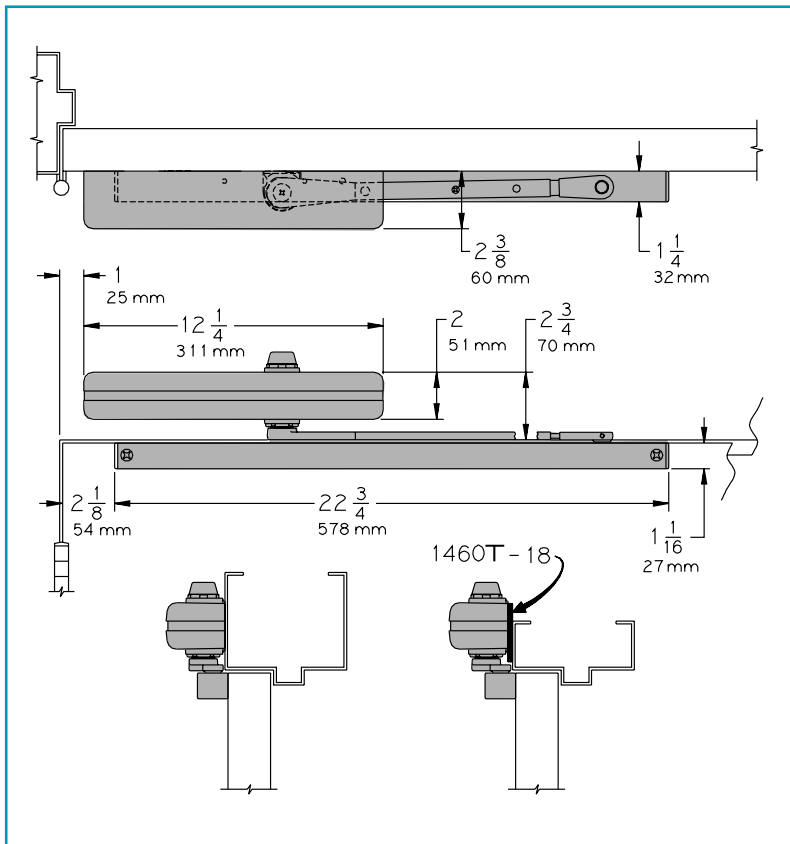


- ▶ **Butt Hinges** should not exceed 5" (127 mm) in width.
- ▶ **Auxiliary Stop** is recommended where a door cannot swing 180°. Optional track bumper assembly assists backcheck in cushioning the opening swing of the door. It is not intended to replace an auxiliary stop.
- ▶ **Reveal** should not exceed 1/8" (3 mm).
- ▶ **Top Rail** less than 2 1/2" (64 mm) requires PLATE, 1460-18. Plate requires 1 1/2" (38 mm) minimum. With full cover, use PLATE, 1460-18FC.
- ▶ **Clearance** of 2 3/8" (60 mm) behind door required for 90° installation.

LCN DIVISION
P.O. BOX 100
121 W. RAILROAD AVE.
PRINCETON, IL, USA 61356-0100

PHONE 800-526-2400
FAX 800-248-1460

LCN 1460T SERIES



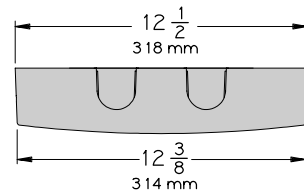
TOP JAMB (PULL SIDE) MOUNTING

MAXIMUM OPENING

Templating allows up to 180°, limited to 110° when optional bumper is installed.

Hold-open points at 85°, 90°, 95° or 100° with hold-open tracks.

Optional Designer Series Cover



- ▶ **Butt Hinges** should not exceed 5" (127 mm) in width.
- ▶ **Auxiliary Stop** is recommended where a door cannot swing 180°. Track bumper assembly assists backcheck in cushioning the opening swing of the door. It is not intended to replace an auxiliary stop.
- ▶ **Head Frame** less than 2 3/4" (70 mm) requires PLATE, 1460-18. Plate requires 1 3/4" (44 mm) minimum. With full cover, use PLATE, 1460-18FC.
- ▶ **Reveal** (hinge side) should not exceed 1/8" (3 mm).
- ▶ **Top Rail** minimum 1 1/4" (32 mm).
- ▶ **Clearance** 1 1/4" (32 mm) behind door for 90° installations.

Options

- ▶ Regular track with bumper.
- ▶ Hold-open track.
- ▶ Hold-open track with bumper.
- ▶ Full cover.
- ▶ EC cover.
- ▶ Designer Series Metal cover.

Special Templates

Customized installation templates or products may be available to solve unusual applications. Contact LCN for assistance.

LCN 1460T SERIES

MOUNTING DETAILS

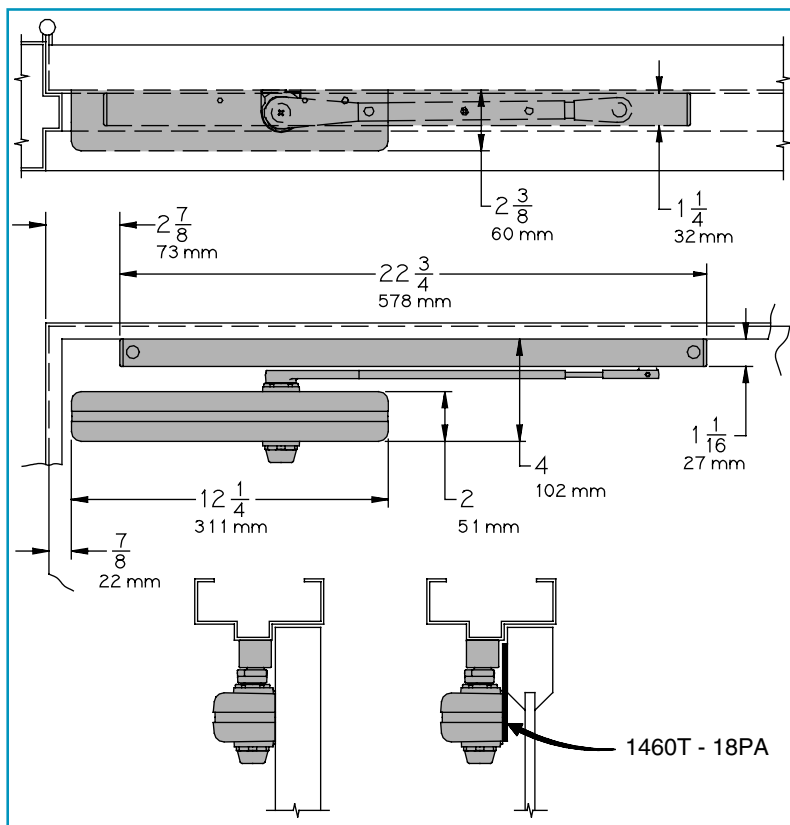
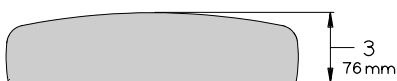
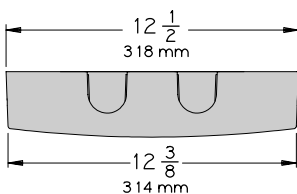
STOP FACE (PUSH SIDE) MOUNTING

MAXIMUM OPENING

Templating allows 110°, limited to 100° when optional bumper is installed.

Hold-open points at 85°, 90°, 95°, or 100° with hold-open tracks.

Designer Series Cover



- ▶ **Butt Hinges** should not exceed 5" (127 mm) in width.
- ▶ **Auxiliary Stop** is recommended where a door cannot swing 110°. Track bumper assembly assists backcheck in cushioning the opening swing of the door. It is not intended to replace an auxiliary stop.
- ▶ **Clearance** 1460T projects 2 3/8" (60 mm) from door face.
- ▶ **Top Rail** less than 4" (102 mm) measured from the stop face requires PLATE, 1460-18PA. Plate requires 1 1/2" (38 mm) minimum. With full cover, use PLATE, 1460-18PAFC.
- ▶ **Stop Width** minimum 1 1/4" (32 mm).

Options

- ▶ Regular track with bumper.
- ▶ Hold-open track.
- ▶ Hold-open track with bumper.
- ▶ Full cover.
- ▶ EC cover.
- ▶ Designer Series Metal cover.

Special Templates

Customized installation templates or products may be available to solve unusual applications. Contact LCN for assistance.

LCN DIVISION
P.O. BOX 100
121 W. RAILROAD AVE.
PRINCETON, IL, USA 61356-0100

PHONE 800-526-2400
FAX 800-248-1460

LCN 1460T SERIES

COVERS

COVER, 1460-72

Standard, non-handed, slimline non-metallic cover with feature strip.

FULL COVER, 1460-72FC

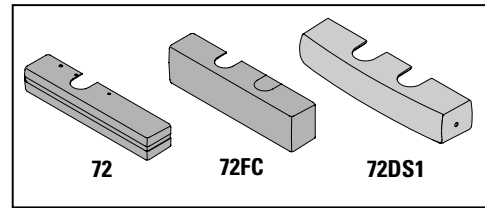
Optional, non-handed, non-metallic cover provides complete enclosure.

DESIGNER METAL COVER, 1460-72DS1

Optional, non-handed designer series metal full cover provides complete enclosure with a stylish look.

COVER, 1460-72EC

Optional, non-handed, non metallic slimline cover.

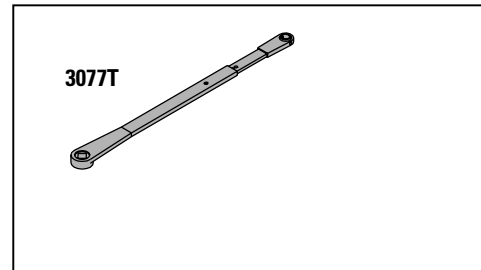


ARM

STANDARD ARM, 1460-3077T

Standard, non-handed single lever arm mounts hinge side, top jamb, or stop face.

Track roller not included with arm.



TRACKS

REGULAR TRACK, 1460T-3038

Standard, non-hold-open, non-handed track mounts on either side of the door.

Will accept hold-open clip and/or bumper assembly.

REGULAR TRACK with BUMPER, 1460T-3038B

Optional, non-hold-open, non-handed track with bumper mounts on either side of the door.

Will accept hold-open clip.

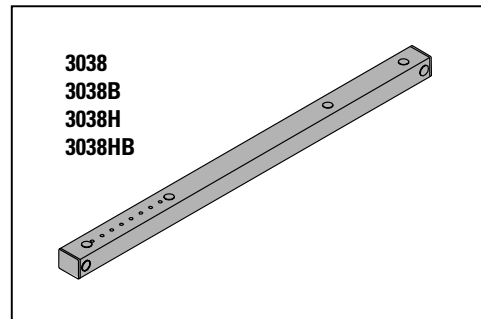
HOLD-OPEN TRACK, 1460T-3038H

Optional, non-handed hold-open track mounts on either side of the door.

Will accept bumper assembly.

HOLD-OPEN TRACK with BUMPER, 1460T-3038HB

Optional, non-handed hold-open track with bumper mounts on either side of the door.



LCN 1460T SERIES

INSTALLATION ACCESSORIES

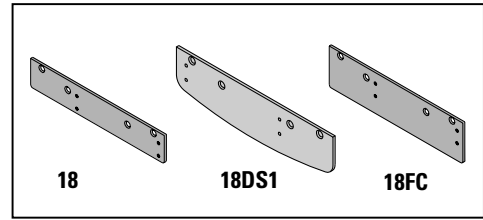
PLATE, 1460-18/1460-18DS1/18FC

Required for hinge side mount where top rail is less than 2 1/4" (57 mm).

Required for top jamb mount when head frame is less than 2 3/4" (70 mm).

Plate requires minimum 1 1/2" (38 mm) top rail or 1 3/4" (44 mm) head frame minimum.

With full cover, use PLATE, 1460-18FC.

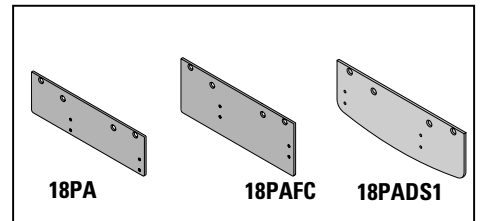


PLATE, 1460-18PA/1460-18PADS1/18FC

Required for stop face mounting where top rail is less than 4" (102 mm), measured from the stop.

Plate requires 1 1/2" (38 mm) minimum top rail.

With full cover, use PLATE, 1460-18PAFC.

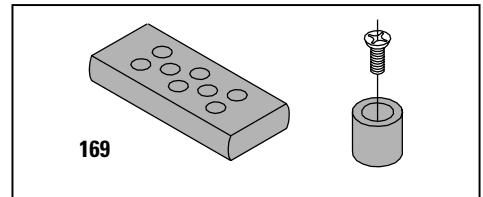


TRACK BUMPER, 1460T-169

Mounts in track to assist backcheck, not replace auxiliary stop.

Limits maximum opening.

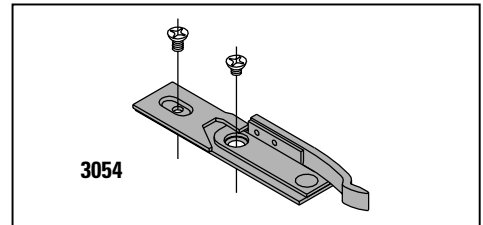
Consists of bumper, bumper post, and mounting screw.



HOLD-OPEN CLIP, 1460T-3054

Mounts in track to provide hold-open function.

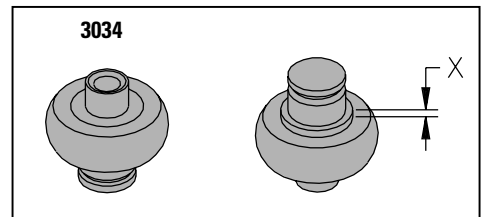
Hold-open point controlled by clip location.



TRACK ROLLER, 1460T-3034

Quiet, low friction roller assembly.

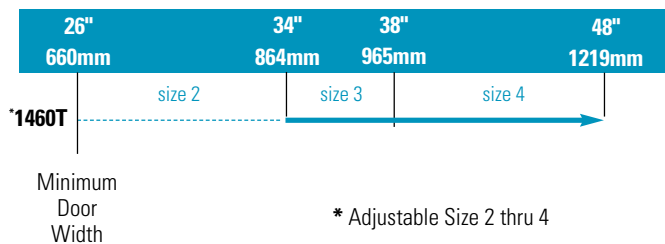
Shoulder dimension "X" = 1/8" (3 mm).



LCN 1460T SERIES

TABLE OF SIZES Select closer based on width of door.
 The spring power of a 1460T cylinder is adjustable from size 2 to size 4 and is shipped adjusted to size 3.
 The spring power of a 1461T cylinder is adjustable from size 1 to size 2 and is shipped adjusted to size 1.
 The closing power of 1460T series cylinders may be increased 50%.
 → Indicates recommended range of door width for closer size.


INTERIOR DOOR WIDTH



REDUCED OPENING FORCE 1460T CLOSERS

CAUTION ! Any manual door closer, including those certified by BHMA to conform to ANSI Standard A156.4, that is selected, installed and adjusted based on ADA or other reduced opening force requirements may not provide sufficient power to reliably close and latch a door.

Refer to POWER OPERATORS section for information on systems that meet reduced opening force requirements without affecting closing power.

	DOOR WIDTH	36"	42"	48"
	8.5* lbs.	N/A	N/A	N/A
	5.0* lbs.	1461T	1461T	1461T

* Maximum opening force

HOW-TO-ORDER 1460T SERIES CLOSERS

1. SELECT CYLINDER SIZE

- 1461T (ADA)
- 1460T (adjustable from size 2 to 4)

2. SPECIFY FINISH

- Standard Powder Coat _____
Aluminum, Statuary, Light Bronze, Tan, Brass, Black, Dark Bronze
- Custom Powder Coat _____
- SRI primer

Closer will be shipped with:

- METAL COVER.
- SLIM LINE COVER.
- STANDARD ARM,
- REGULAR TRACK,
- TRACK ROLLER
- SELF-REAMING and TAPPING SCREWS (new), unless options listed below are selected.

CLOSER OPTIONS

COVER

- Full cover
- EC cover
- Designer series metal full cover (non-handed)

TRACK

- Regular with Bumper
- Hold-Open
- Hold-Open with Bumper

SCREW PACK

- TB* and Machine Screw
- TB*, Wood and Machine Screw
- TORX Machine Screw
- TB* and TORX Machine Screw
- TB*, SRT Screws

* Specify door thickness if other than 1 3/4".

SPECIAL TEMPLATE

- ST- _____

INSTALLATION ACCESSORIES

- Plate, 1460-18/1460-18DS1
- Plate, 1460-18FC
- Plate, 1460-18PA/1460-18PADS1
- Plate, 1460-18PAFC