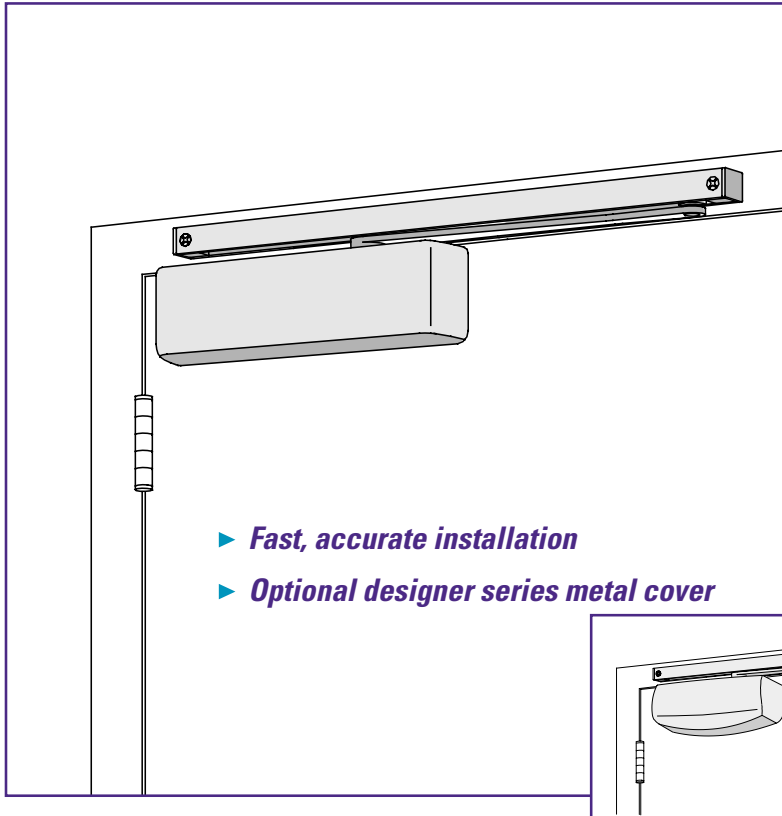


LCN 4040T SERIES



The 4040T SUPER SMOOTHIE® is a heavy duty, single lever (track) arm closer designed for institutional and other high traffic applications. This non-handed closer is specifically designed for interior doors.

A choice of finishes, track functions, and installation accessories meet virtually all architectural requirements.

The 4040T Series is UL and ULC listed with a standard arm for self-closing doors. Tested and certified under ANSI Standard A156.4, grade one.

- ▶ Standard 4040T series closer shipped with standard arm, regular track (non-hold-open), track roller, standard non-metallic cover, and self reaming and tapping screws.
- ▶ Non-sized cylinders for interior doors to 4'0".
- ▶ Closer mounts pull side on door, pull side top jamb or push side on door.
- ▶ Closers to meet ADA requirements.
- ▶ Standard or custom powder coat finish.
- ▶ Optional plated finish on cover, arm and fasteners.
- ▶ SRI primer for installations in corrosive conditions.
- ▶ Consult factory for double egress applications.
- ▶ FAST™ adjust dial. **NEW!**

MOUNTING			FINISH		COVER		CYLINDER				ARM FUNCTION*								
HINGE SIDE	TOP JAMB	PARALLEL ARM	POWDER COAT	PLATED	NON-METALLIC	METAL	DESIGNER METAL	NON-HANDED	NON-SIZED	ACCESSIBILITY	DELAY ACTION	AVB	REGULAR	HOLD-OPEN	FUSIBLE LINK	EXTRA DUTY	CUSH-N-STOP	WARRANTY	MAINTENANCE
●	●	●	●	●	●	●	●	●	○	○	○	○	○	○	○	○	○	10yr	NR

● Available
○ Not available

♿ Closer available with less than 5.0 lbs. opening force on 36" door.
* Maximum opening with standard template.
NR = No periodic maintenance required.

LCN 4040T SERIES

MOUNTING DETAILS

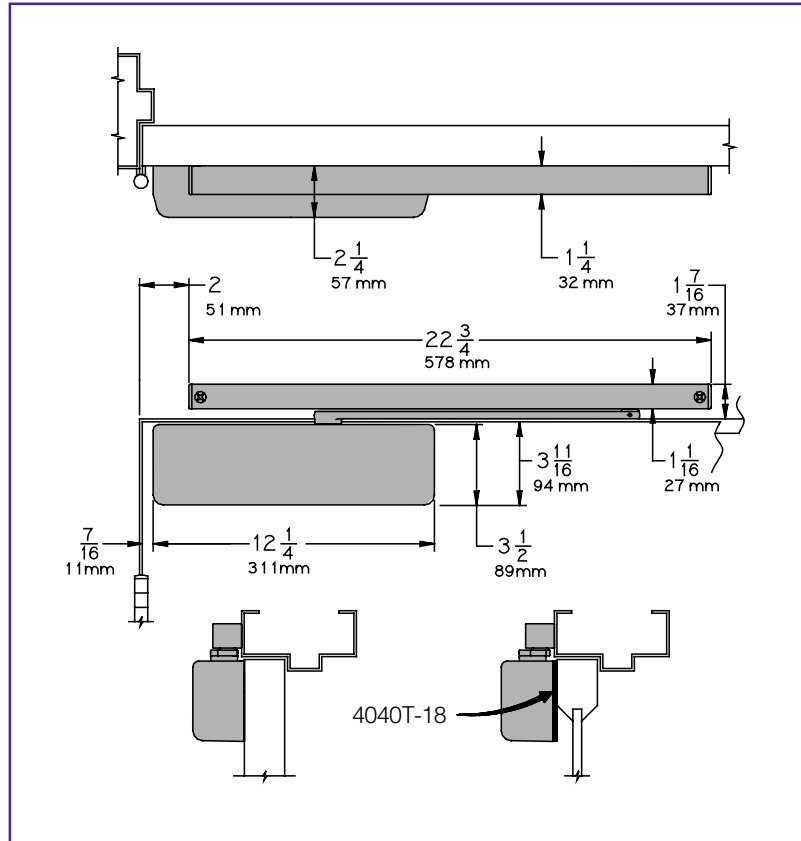
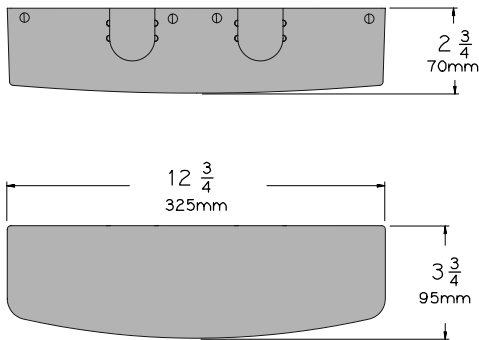
HINGE (PULL) SIDE MOUNTING

MAXIMUM OPENING

Templating allows 120° with standard arm, limited to 110° when optional bumper is installed.

Hold-open points at 85°, 90°, 95°, 100°, 105°, or 110°, depending on the clip location in track.

Optional Designer Series Cover



- ▶ **Butt Hinges** should not exceed 5" (127 mm) in width.
- ▶ **Auxiliary Stop** is recommended at hold-open point or where a door cannot swing 120°. Optional track bumper assembly assists backcheck in cushioning the opening swing of the door. It is not intended to replace an auxiliary stop.
- ▶ **Reveal** should not exceed 1/8" (3 mm) for standard arm.
- ▶ **Top Rail** less than 3 3/4" (95 mm) requires PLATE, 4040-18. Plate requires 1 13/16" (116 mm) minimum.
- ▶ **Head Frame** requires 1 1/4" (32 mm) minimum.
- ▶ **Clearance** of 2 1/4" (57 mm) behind door required for 90° installation.

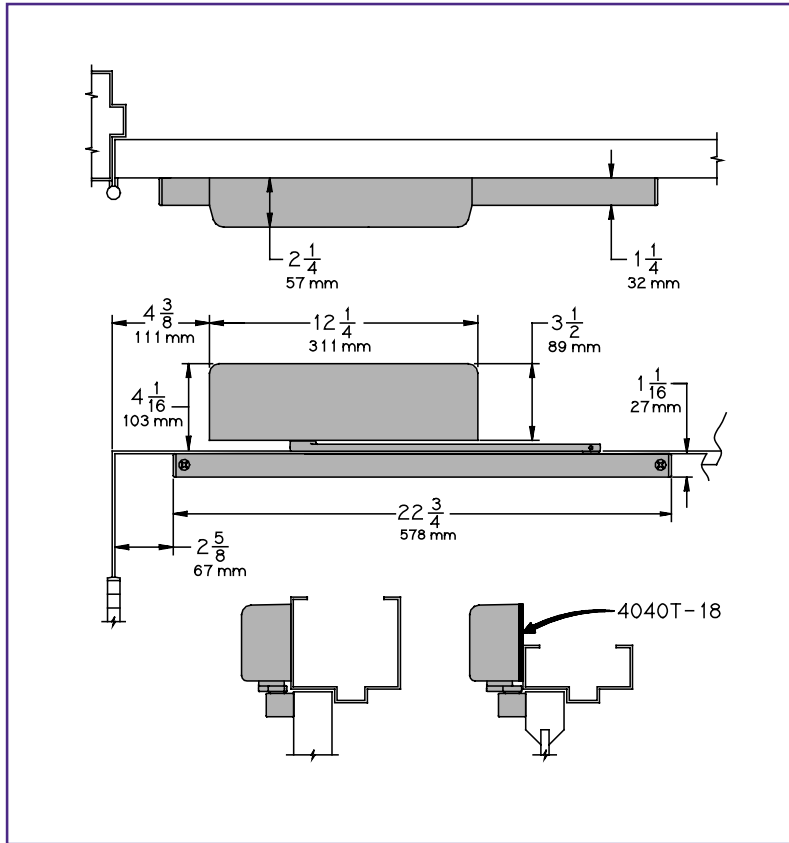
Options

- ▶ Regular track with bumper, hold-open track, hold-open track with bumper.
- ▶ Metal or lead lined cover.
- ▶ ST required for double egress applications. Consult factory

Special Templates

Customized installation templates or products may be available to solve unusual applications. Contact LCN for assistance.

LCN 4040T SERIES



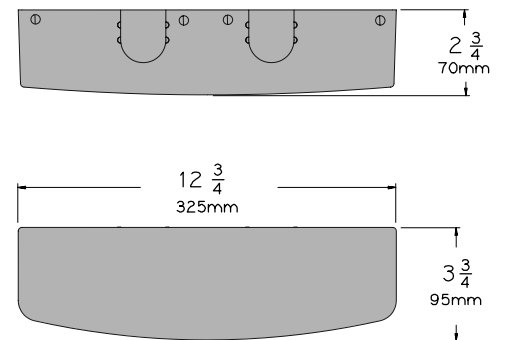
TOP JAMB (PULL SIDE) MOUNTING

MAXIMUM OPENING

Templating allows 180° with standard track arm, limited to 110° with optional bumper installed.

Hold-open points at 85°, 90°, 95°, 100°, 105° or 110° with hold-open tracks.

Optional Designer Series Cover



- ▶ **Butt Hinges** should not exceed 5" (127 mm) in width.
- ▶ **Auxiliary Stop** is recommended at hold-open point or where a door cannot swing 180°. Optional track bumper assembly assists backcheck in cushioning the opening swing of the door. It is not intended to replace an auxiliary stop.
- ▶ **Reveal** should not exceed 1/8" (3 mm).
- ▶ **Head Frame** less than 3 7/8" (98 mm), requires PLATE, 4040T-18. Plate requires 1 3/4" (44 mm) minimum.
- ▶ **Clearance** of 1 1/2" (38 mm) behind door required for 180° installation.

Options

- ▶ Regular track with bumper, hold-open track, hold-open track with bumper.
- ▶ Metal or lead lined cover.

Special Templates

Customized installation templates or products may be available to solve unusual applications. Contact LCN for assistance.

LCN 4040T SERIES

MOUNTING DETAILS

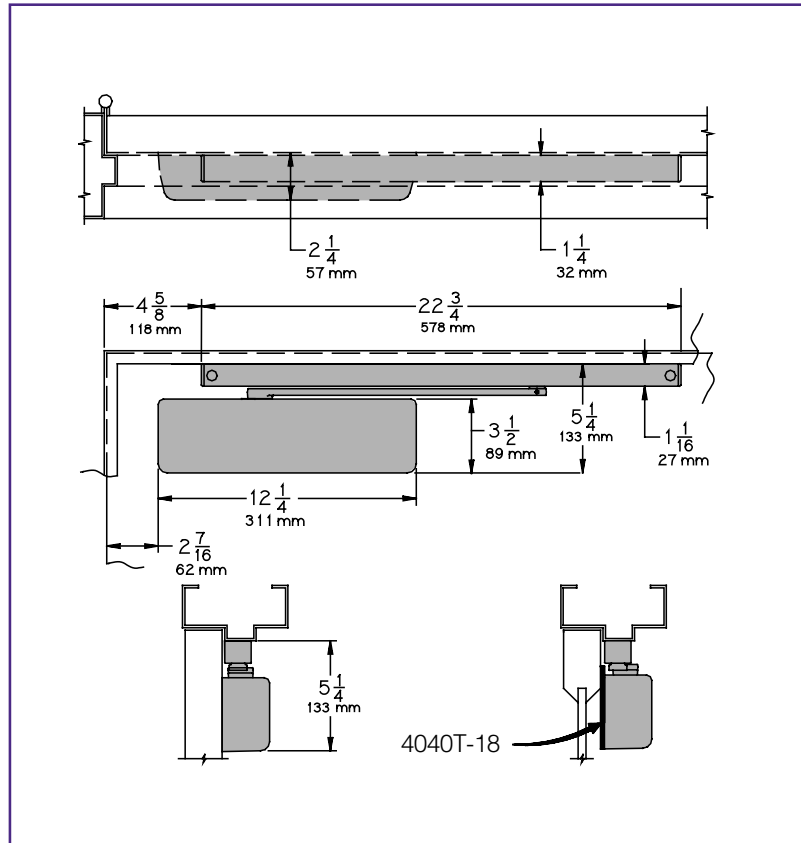
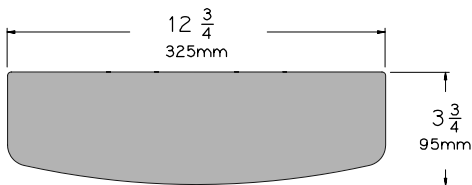
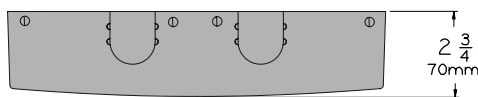
STOP FACE (PUSH SIDE) MOUNTING

MAXIMUM OPENING

Templating allows 120° with standard track arm, limited to 110° with optional bumper tracks.

Hold-open points at 85°, 90°, 95°, 100°, 105° or 110° with hold-open tracks.

Optional Designer Series Cover



- ▶ **Butt Hinges** should not exceed 5" (127 mm) in width.
- ▶ **Auxiliary Stop** is recommended at hold-open point or where a door cannot swing 120°. Optional track bumper assembly assists backcheck in cushioning the opening swing of the door. It is not intended to replace an auxiliary stop.
- ▶ **Clearance** projects 2 1/4" (57 mm) from face of door.
- ▶ **Top Rail** less than 5 1/4" (133 mm) measured from the stop, requires PLATE, 4040-18. Plate requires 3 1/2" (89 mm) minimum.
- ▶ **Stop Width** minimum 1 1/4" (32 mm).

Options

- ▶ Regular track with bumper, hold-open track, hold-open track with bumper.
- ▶ Metal or lead lined cover.

Special Templates

Customized installation templates or products may be available to solve unusual applications. Contact LCN for assistance.

LCN 4040T SERIES

COVERS

COVER, 4040-72

Standard, non-handed non-metallic cover.

LEAD LINED COVER, 4040-72LL

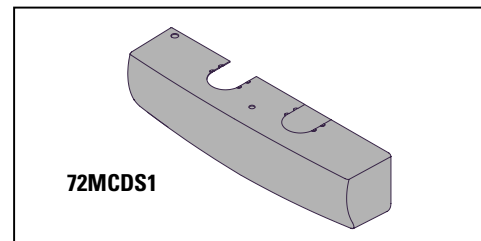
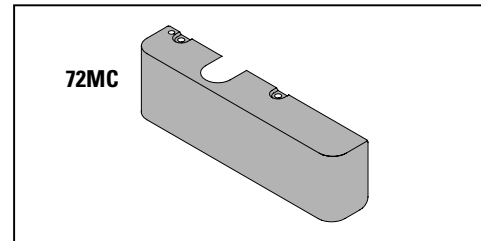
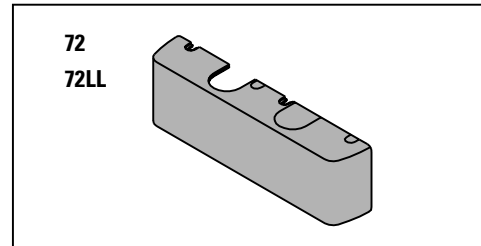
Optional non-handed, non-metallic cover.

METAL COVER, 4040-72MC

Optional, handed cover. Required for plated finishes.

DESIGNER METAL COVER, 4040-72MCDS1 *NEW!*

Optional, non-handed designer series metal cover.



ARMS

STANDARD ARM, 4040T-3077

Standard, non-handed arm.

Arm does not include track roller.

TRACKS

REGULAR TRACK, 4040T-3038

Standard, non-hold-open, non-handed track.

Will accept hold-open clip and/or bumper assembly.

REGULAR TRACK with BUMPER, 4040T-3038B

Optional non-hold-open, non-handed track with bumper assembly installed.

Will accept hold-open clip.

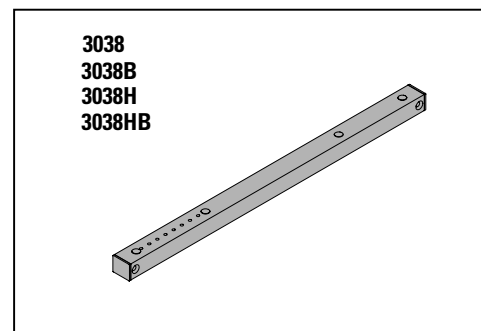
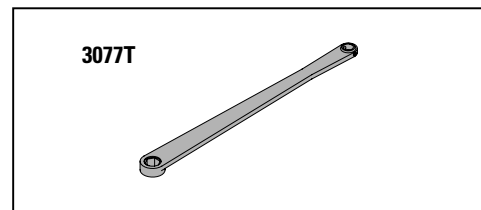
HOLD-OPEN TRACK, 4040T-3038H

Optional, non-handed track with hold-open clip installed.

Will accept bumper assembly.

HOLD-OPEN TRACK with BUMPER, 4040T-3038HB

Optional, non-handed track with hold-open clip and bumper assembly installed.



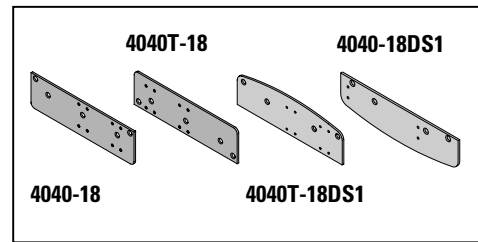
LCN 4040T SERIES

INSTALLATION ACCESSORIES

PLATE, 4040T-18/ 4040T-18DS1

Required for pull side top jamb installations where head frame is less than 3 ⁷/₈" (98 mm).

Plate requires minimum 1 ¹⁵/₁₆" (50 mm) top rail.



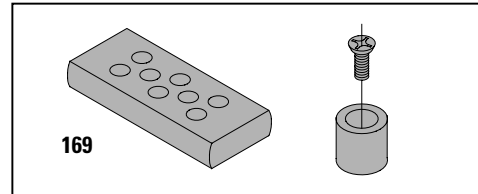
PLATE, 4040-18/4040-18DS1

Required for pull side (door mount) installations where head frame is less than 3 ³/₄" (95 mm).

Plate requires minimum 1 ¹³/₁₆" (46 mm) top rail.

Required for push side (door mount) installations where top rail is less than 6" (152 mm).

Plate requires minimum 2 ⁵/₈" (67 mm) top rail.

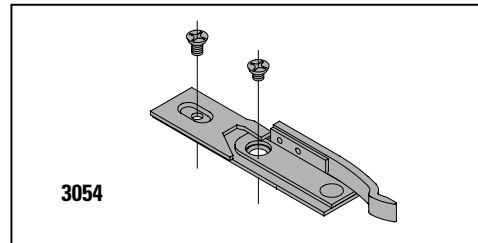


TRACK BUMPER, 4040T-169

Mounts in track to assist backcheck, not replace auxiliary stop.

Limits maximum opening.

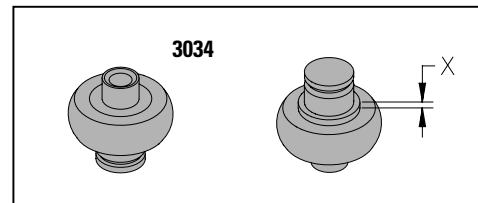
Consists of bumper, bumper post, and mounting screw.



HOLD-OPEN CLIP, 4040T-3054

Mounts in track to provide hold-open function.

Hold-open point controlled by clip location.



TRACK ROLLER, 4040T-3034

Quiet, low friction roller assembly.

Shoulder dimension "X" = 1/8" (1mm).

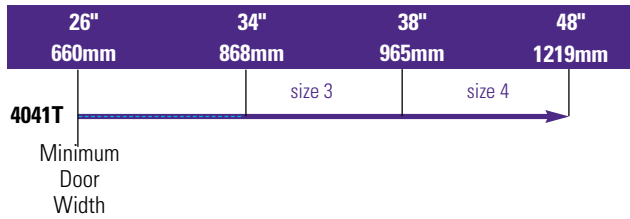
LCN 4040T SERIES

TABLE OF SIZES

Non-Sized 4041T cylinder is adjustable from sizes 1 thru 4 and is shipped set to size 3.

→ Indicates recommended range of door width for closer size.


INTERIOR DOOR WIDTH



REDUCED OPENING FORCE 4040T CLOSERS

CAUTION! Any manual door closer, including those certified by BHMA to conform to ANSI Standard A156.4, that is selected, installed and adjusted based on ADA or other reduced opening force requirements may not provide sufficient power to reliably close and latch a door.

Refer to POWER OPERATORS section for information on systems that meet reduced opening force requirements without effecting closing power.

	DOOR WIDTH	36"	42"	48"
	8.5* lbs.	N/A	N/A	N/A
	5.0* lbs.	4041T	4041T	4041T

* Maximum opening force

HOW-TO-ORDER

4040T SERIES CLOSERS

1. SPECIFY FINISH

- Standard Powder Coat _____
Aluminum, Statuary, Light Bronze, Tan, Brass, Black, Dark Bronze
- Custom Powder Coat _____
- Plated Finish, US _____
- (optional metal cover will be furnished)
SRI primer

Closer will be shipped with:

- STANDARD COVER,
- STANDARD ARM,
- TRACK ROLLER,
- REGULAR TRACK,
- SELF-REAMING and TAPPING SCREWS (new),
unless options listed below are selected.

CLOSER OPTIONS

COVER

- Lead Lined
- Metal (specify right or left hand)
- Designer series metal (non-handed)

TRACK

- Regular with Bumper
- Hold-Open
- Hold-Open with Bumper

SPECIFY SCREW PACK

- Wood & Machine Screw
- TB* and Machine Screw
- TB*, Wood & Machine Screw
- TORX Machine Screw
- TB* & TORX Machine Screw
- TBSRT

* Specify door thickness if other than 1 3/4".

INSTALLATION ACCESSORY

- Plate, 4040T-18/4040T-18DS1
- Plate, 4040T-18/4040T-18DS1

SPECIAL TEMPLATE

- ST- _____